

INSTALLATION GUIDE



Column Set 05
For 1960 – 1965 Falcon/Comet
with non-collapsible OEM steering shaft

P/N: TCP COLM-05

DESCRIPTION:

LOWER COLUMN FLOOR SUPPORT BRACKET WITH COLUMN CLAMP, ADAPTER PLATE AND MOUNTING HARDWARE

APPLICATIONS:

FITS '60 - '65 FALCON/COMET WITH 2-1/4" COLUMNS

PARTS LIST

Item	Part Number	Description	Quantity
1	7900-055	Column Clamp, 2-1/4" Diameter	1
2	7900-139	Lower Column Support Bracket Assembly	1
-	7918-008	Hardware Bag for TCP COLM-05	1
3	7900-169	Column Seal '60-'65 Falcon	1
4	7900-182	Firewall Support Adapter	1

7918-008 *Hardware Bag for TCP COLM-05*

Item	Part Number	Description	Quantity
A	3101-019-32C	Locknut, 10-32 Nylon Insert, 3/8 Hex	6
B	3104-019F0.75S	Button Head 10-32 x 3/4" Cap Screw	6
C	3106-038FD0.75B	Set Screw 3/8-24x .75" Dog Point	2
D	3120-019S-S	Washer 10-32 Flat SAE .219 x .500 x .049 Thick	6

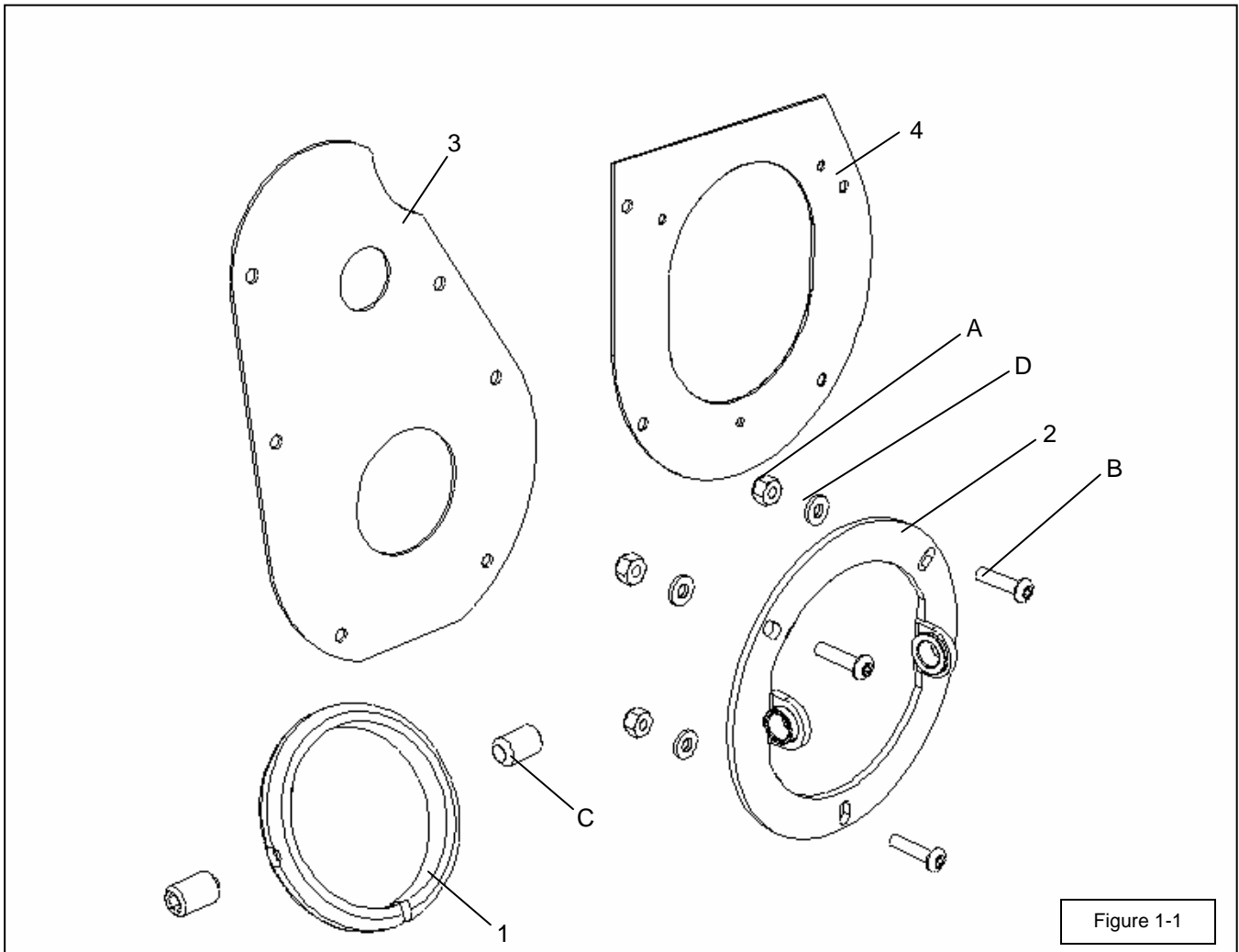
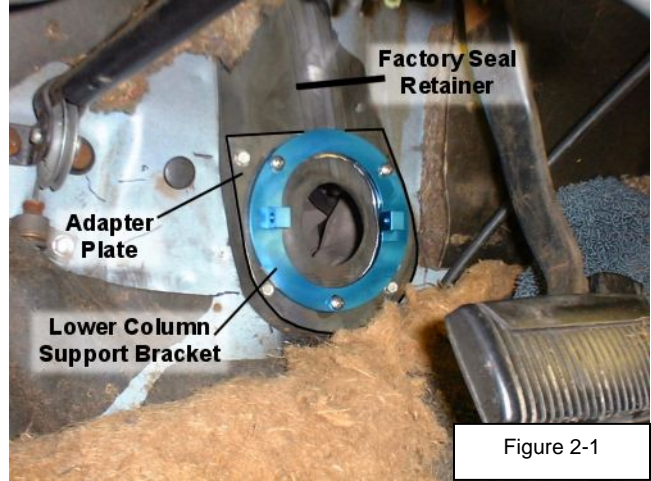


Figure 1-1

INSTRUCTIONS

1. Unscrew factory firewall seal retainer plate and remove firewall seal.
2. Replace with supplied seal (Item 3).
3. Reinstall seal retainer plate and adapter plate over new seal using original hardware (Figure 2-1).
 - a. Verify that the bolt pattern of adapter plate (Item 4) matches the existing holes through retainer and firewall.
 - i. If adapter plate pattern does not match factory holes, new holes will have to be drilled to match the support bracket.
 - ii. Mark the hole locations with a center punch or begin drilling hole with bracket in place.
4. Once holes have been drilled, the adapter plate and seal retainer can be mounted to the firewall as shown in illustration (Figure 2-1).
5. Lower column support bracket will be installed on top of the adapter plate using the supplied hardware shown in illustration (Figure 1-1).
 - a. If the three mounting holes are obstructed, use a 13/64" bit to drill through the retainer plate.
 - b. Use the supplied hardware to mount the support bracket to the adapter.
6. Start screwing the set screws (Item C) into the support bracket.
 - a. Do not thread set screws past the inside edge of the support bracket.
7. The column clamp (Item 1) will already be on the steering column as instructed in the 7903-COLM-01 installation guide.
8. Insert completed steering column assembly through the firewall seal (Figure 2-2).
 - a. Seal will stretch to allow column to pass through.
9. Position column at original height.
10. Secure column using upper dash bracket.
11. Column clamp can now be slid into correct position to line up with set screws.
12. Continue tightening set screws until column is held securely.



WARRANTY NOTICE:

There are **NO WARRANTIES**, either expressed or implied. Neither the seller nor manufacturer will be liable for any loss, damage or injury, direct or indirect, arising from the use or inability to determine the appropriate use of any product. Before any attempt at installation, all drawings and/or instruction sheets should be completely reviewed to determine the suitability of the product for its intended use. In this connection, the user assumes all responsibility and risk. We reserve the right to change specification without notice. Further, Chris Alston's Chassisworks, Inc., makes **NO GUARANTEE** in reference to any specific class legality of any component. **ALL PRODUCTS ARE INTENDED FOR RACING AND OFF-ROAD USE AND MAY NOT BE LEGALLY USED ON THE HIGHWAY.** The products offered for sale are true race-car components and, in all cases, require some fabrication skill. **NO PRODUCT OR SERVICE IS DESIGNED OR INTENDED TO PREVENT INJURY OR DEATH.**



Total Control Products
A Chris Alston's Chassisworks, Inc. Brand
8661 Younger Creek Drive
Sacramento, CA 95828
Phone: 916-388-0288
Technical Support: tcptech@cachassisworks.com
7903-COLM-05A

REV 01/15/05