

INSTALLATION GUIDE



Column Set 04

For 1964 – Early 1967 Mustang/Cougar
with non-collapsible OEM steering shaft

P/N: TCP COLM-04

DESCRIPTION:

LOWER COLUMN FLOOR SUPPORT BRACKET WITH COLUMN CLAMP AND MOUNTING HARDWARE

APPLICATIONS:

FITS '64 - EARLY '67 MUSTANG/COUGAR WITH 2-1/4" COLUMNS

PARTS LIST

Item	Part Number	Description	Quantity
1	7900-055	Column Clamp, 2-1/4" Diameter	1
2	7900-139	Lower Column Support Bracket Assembly	1
-	7918-007	Hardware Bag for TCP COLM-04	1
3	7900-167	Column Seal 64-67 Early Mustang	1

7918-007 Hardware Bag for TCP COLM-04

Item	Part Number	Description	Quantity
A	3101-019-32C	Locknut, 10-32 Nylon Insert Grade 5 Clear Zinc Plated 3/8 Hex	3
B	3104-019F0.75S	Button Head 10-32 x 3/4" Button Head Cap Screw Grade 5 Stainless	3
C	3106-038FD0.75B	Set Screw 3/8-24x .75" Dog Point Grade 8 Black	2
D	3250	Washer 10-32 Flat SAE .219 x .500 x .049 Thick, Stainless Steel	3

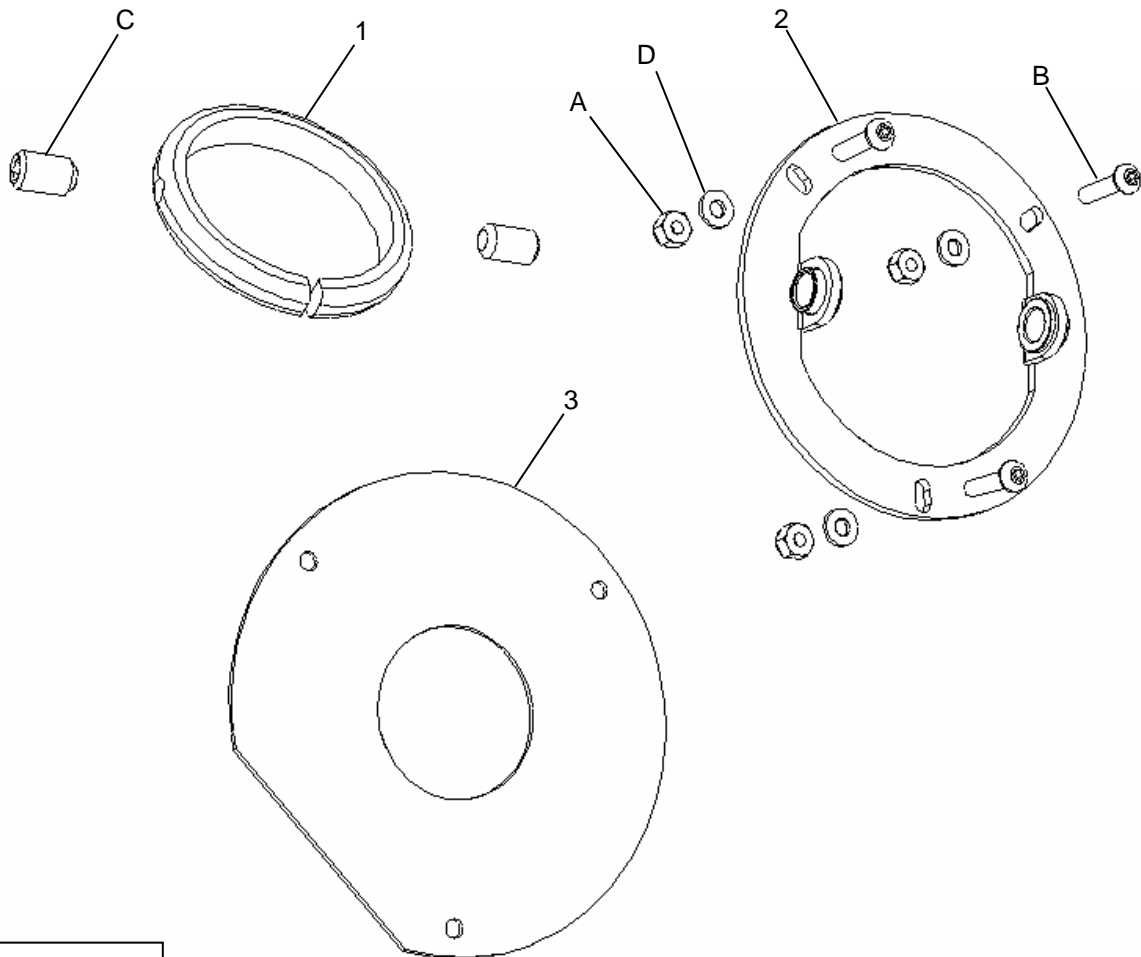
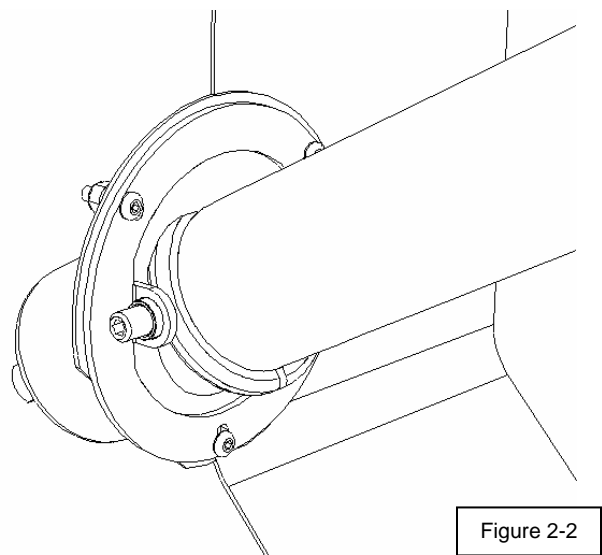
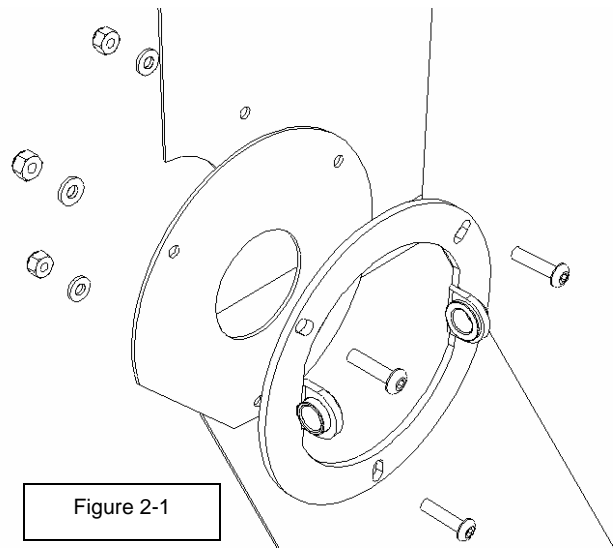


Figure 1-1

INSTRUCTIONS

1. Place column support bracket (Item 2) against inside of firewall at factory hole for steering column.
2. Verify that the bolt pattern of support bracket (Item 2) matches the existing holes through firewall.
 - a. If support bracket pattern matches factory holes, remove the bracket and use a 13/64" bit to open up the holes.
 - b. If support bracket pattern does not match factory holes, new holes will have to be drilled to match the support bracket.
 - i. Mark the hole location with a center punch or begin drilling hole with bracket in place.
 - ii. We suggest starting the holes then removing the bracket to reduce the chance of damaging the finish of the bracket.
3. Once holes have been drilled, the support bracket and column seal can be mounted to the firewall as shown in illustration (Figure 2-1).
4. Start screwing the set screws (Item C) into the support bracket.
 - a. Do not thread past the inside edge of the support bracket.
5. The column clamp (Item 1) will already be on steering column as instructed in the 7903-COLM-01 installation guide.
6. Insert completed steering column assembly through the firewall seal. (Figure 2-2)
 - a. Seal will stretch to allow column to pass through.
7. Position column at original height.
8. Secure column using upper dash bracket.
9. Column clamp can now be slid into correct position to line up with set screws.
10. Continue tightening set screws until column is held securely.



WARRANTY NOTICE:

There are **NO WARRANTIES**, either expressed or implied. Neither the seller nor manufacturer will be liable for any loss, damage or injury, direct or indirect, arising from the use or inability to determine the appropriate use of any product. Before any attempt at installation, all drawings and/or instruction sheets should be completely reviewed to determine the suitability of the product for its intended use. In this connection, the user assumes all responsibility and risk. We reserve the right to change specification without notice. Further, Chris Alston's Chassisworks, Inc., makes **NO GUARANTEE** in reference to any specific class legality of any component. **ALL PRODUCTS ARE INTENDED FOR RACING AND OFF-ROAD USE AND MAY NOT BE LEGALLY USED ON THE HIGHWAY.** The products offered for sale are true race-car components and, in all cases, require some fabrication skill. **NO PRODUCT OR SERVICE IS DESIGNED OR INTENDED TO PREVENT INJURY OR DEATH.**



Total Control Products
A Chris Alston's Chassisworks, Inc. Brand
8661 Younger Creek Drive
Sacramento, CA 95828
Phone: 916-388-0288
Technical Support: tcptech@cachassisworks.com
7903-COLM-04

REV 01/18/05